

BIXOLON

Installation Guide

OPOS Driver

Ver. 3.33

www.bixolon.com

Copyright

© BIXOLON Co., Ltd. All rights reserved.

This user manual and all property of the product are protected under copyright law. It is strictly prohibited to copy, store, and transmit the whole or any part of the manual and any property of the product without the prior written approval of BIXOLON Co., Ltd. The information contained herein is designed only for use with this BIXOLON product. BIXOLON is not responsible for any direct or indirect damages, arising from or related to use of this information.

- The BIXOLON logo is the registered trademark of BIXOLON Co., Ltd.
- All other brand or product names are trademarks of their respective companies or organizations.

BIXOLON Co., Ltd. maintains ongoing efforts to enhance and upgrade the functions and quality of all our products.

In the following, product specifications and/or user manual content may be changed without prior notice.

Caution

Some semiconductor devices are easily damaged by static electricity. You should turn the printer "OFF", before you connect or remove the cables on the rear side, in order to guard the printer against the static electricity. If the printer is damaged by the static electricity, you should turn the printer "OFF".

Introduction

This is a manual for BIXOLON OPOS DRIVER program, BIXOLON OPOS DRIVER setup, and making application using BIXOLON OPOS DRIVER.

Before use BIXOLON devices, set and configure devices by using BIXOLON OPOS driver Setup Utility.

Throughout this manual, "OLE for Retail POS" is called "OPOS".

Throughout this manual, "Unified for Retail POS" is called "UPOS".

[Further Source]

OLE for Retail POS committee available from <http://monroecs.com/opos.htm>

Driver Update from <http://www.bixolon.com>

It is advisable to read the contents of this manual carefully before using the printer for the first time.

Table of Contents

Copyright.....	2
1. Environment.....	5
1-1 Features	5
1-2 Operation Environment	5
1-3 Accessible Devices	6
2. Installation and Uninstallation.....	11
2-1 Installation.....	11
2-2 Uninstallation	14
3. Precautions	15

1. Environment

1-1 Features

- Through these standardized API functions, you can develop POS systems easily.

1-2 Operation Environment

Operating System	Windows Server 2008 (32/64bit) Windows Server 2008 R2 Windows Server 2012 Windows Server 2012 R2 Windows Server 2016 Windows Server 2019 Windows 7 (32/64bit) Windows 8 (32/64bit) Windows 8.1 (32/64bit) Windows 10 (32/64bit) Windows 11 (64bit)
Supported Languages	Microsoft Visual Basic Version 6.0 Microsoft Visual C++ Version 6.0 Microsoft .NET(C#, VB)

1-3 Accessible Devices

1) POS Printer

Model	S	P	U	E	B	W
STP-103/STP-131	O	O	X	X	X	X
STP-103II/STP-103III	O	O	O	X	X	X
SRP-270/SRP-275 SRP-275II/SRP-275III SRP-280	O	O	O	O	X	X
SRP-330/SRP-340 SRP-350/SRP-350N SRP-350plus/SRP-352plus SRP-330II/SRP-332II SRP-330III/SRP-332III SRP-340II/SRP-342II SRP-350II/SRP-350IIK SRP-350plusII/SRP-352plusII SRP-350III/SRP-352III SRP-350V/SRP-352V SRP-370/SRP-372 SRP-500	O	O	O	O	X	X
SRP-350plusF	O	X	X	X	X	X
SRP-350IIIBE	X	X	O	O	O	X
SRP-F310/SRP-F312	O	O	O	O	X	O
SRP-350plusIII/SRP-352plusIII SRP-350plusV/SRP-352plusV SRP-F310II/SRP-F312II SRP-F313II/SRP-S300 SRP-380plus/SRP-382plus SRP-S300II	O	O	O	O	O	O
SRP-380/SRP-382/SRP-383 SRP-Q200/SRP-S320	O	X	O	O	O	O
SRP-Q300/SRP-Q302 SRP-Q300II	X	X	O	O	O	O
SRP-QE300/SRP-QE302	X	X	O	O	X	X
SRP-E300/SRP-E302 SRP-B300 SRP-S200	O	X	O	O	X	X
BK3-3	O	X	O	O	X	X
BK3-2/BK5-3/BK5-4 SRP-B300II	O	X	O	X	X	X
SRP-S3000	O	X	O	O	X	O
SPP-200	O	X	O	X	X	X

OPOS Driver

SPP-R200	O	X	O	X	O	X
SPP-R200II/SPP-R200III SPP-R300/SPP-R310 SPP-R400/SPP-R410	O	X	O	X	O	O
SPP-R210/SPP-R220	X	X	O	X	O	O
SPP-C200/SPP-C300	X	X	O	X	O	X
G30	O	O	O	O	O	O
SRP-G300	X	X	O	X	X	X

* S: Serial, P: Parallel, U: USB, E: Ethernet, B: Bluetooth, W: Wireless LAN

2) Label Printer

Model	S	P	U	E	B	W
SLP-TX400/SLP-TX403 SLP-TX220/SLP-TX223 SLP-TX420/SLP-TX423 SLP-DX220/SLP-DX223 SLP-DX420/SLP-DX423 SLP-DL410/SLP-DL413	O	O	O	O	O	O
SRP-770III	O	O	O	O	O	O
SRP-E770III	O	X	O	O	X	X
XD3-40d/XD3-40t	O	X	O	O	X	X
XT3-40/XT3-43 XT5-40/XT5-43/XT5-46 XT6-60/XT6-63 BT3-40/BT3-43 BT5-40/BT5-43/BT5-46	O	O	O	O	O	O
SPP-L3000 XM5-30	X	X	O	X	O	O
SPP-L310 SPP-L410	O	X	O	X	O	O
XD5-40d/XD5-43d XD5-40t/XD5-43t XD5-40IIId / XD5-43IIId XD5-40IIIt / XD5-43IIIt XL5-40CT/XL5-43CT XM7-40/XM7-20 BD5-40d/BD5-43d BD5-40t/BD5-43t	O	X	O	O	O	O
XM7-30	O	X	O	X	O	O
SRP-S3000_LABEL	O	X	O	O	X	O

* S: Serial, P: Parallel, U: USB, E: Ethernet, B: Bluetooth, W: Wireless LAN



A cradle is required to use the Ethernet interface on the XM7-40/20. (optional)

3) Line Display

Model	Serial	PARALLEL	USB
BCD-1000	O	X	X
BCD-1100	X	X	O
BCD-2000	O	X	O
BCD-3000	X	X	O



BCD-1100/2000/3000 are supported by USB interface,
but it's connected via Virtual COM port.

4) MSR

Model	S	P	U	E	B	W
SPP-R200	O	X	O	X	O	X
SPP-R200II/SPP-R200III SPP-R300/SPP-R310 SPP-R400	O	X	O	X	O	O
SPP-R210/SPP-R220	X	X	O	X	O	O
BM10E	X	X	O	X	X	X

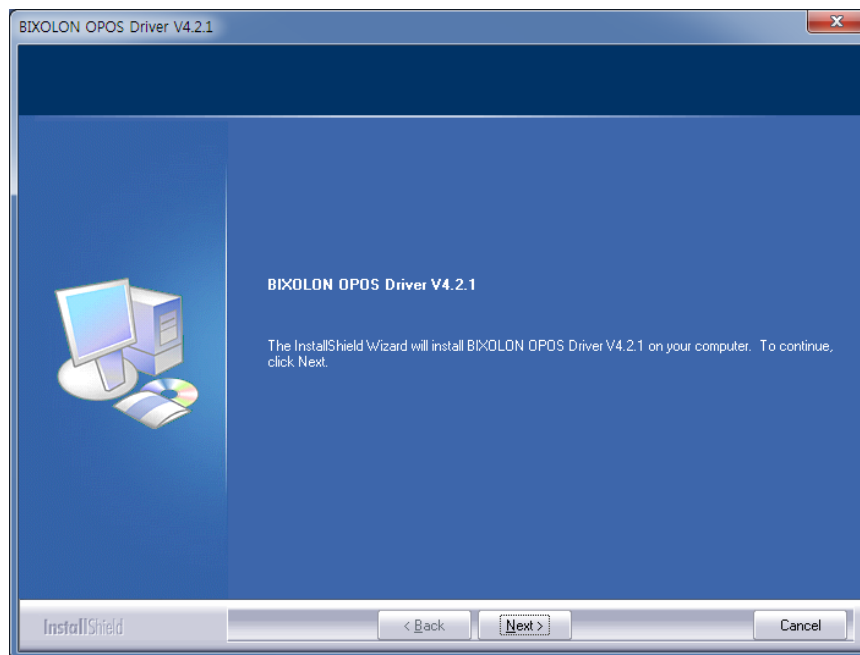
*** S: Serial, P: Parallel, U: USB, E: Ethernet, B: Bluetooth, W: Wireless LAN**

2. Installation and Uninstallation

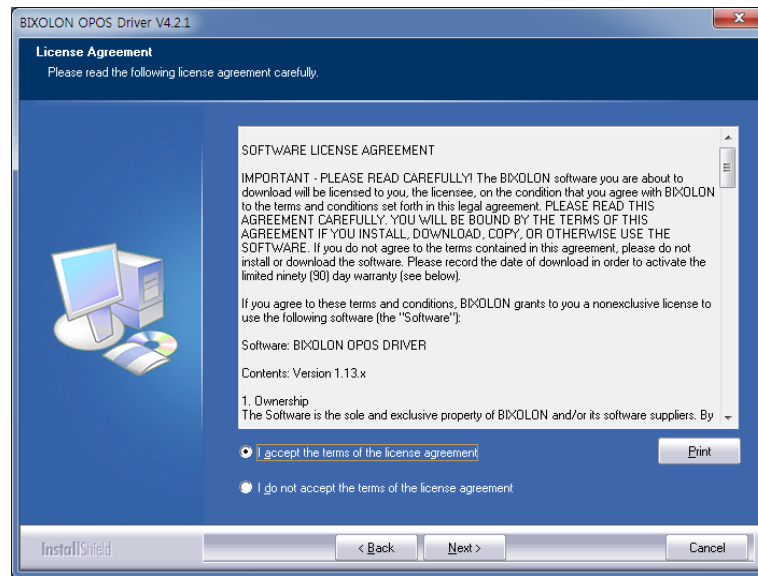
The BIXOLON OPOS driver includes Control Object, Service Object, OPOS Setup Utility and sample programs.

2-1 Installation

- 1) Run the OPOS Driver installation file.
- 2) "Welcome" dialog is displayed.

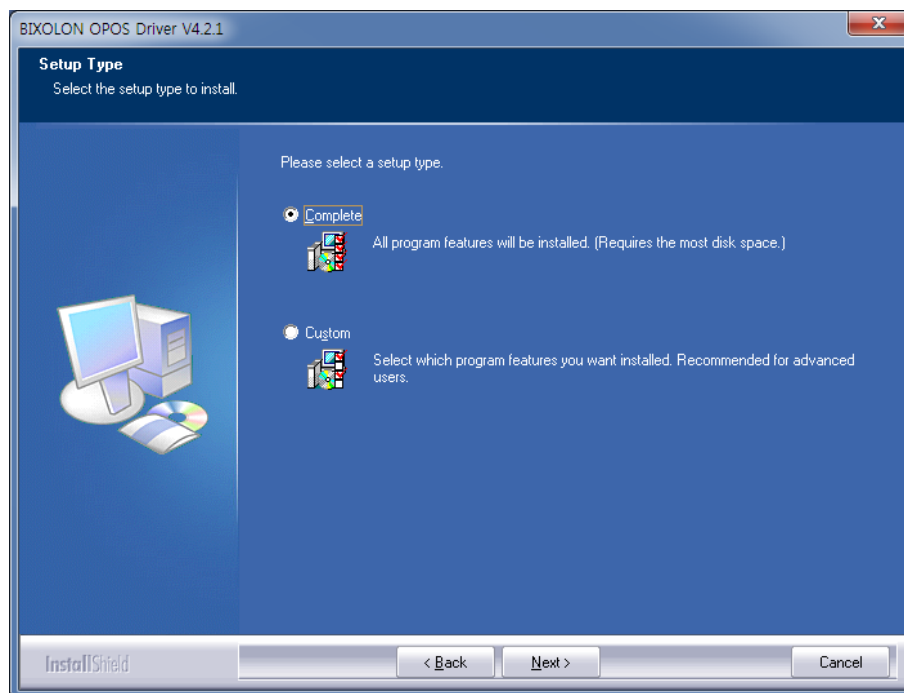


- 3) Agree on the software license. At the moment of installation, the user consents to the license policy of BIXOLON.

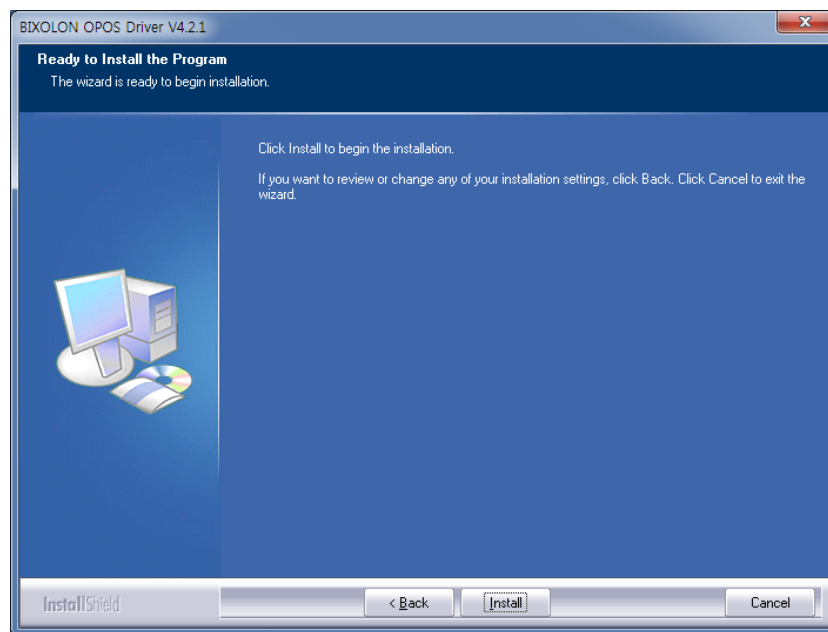


- 4) Please select a type of installation. The default installation location is as follows.

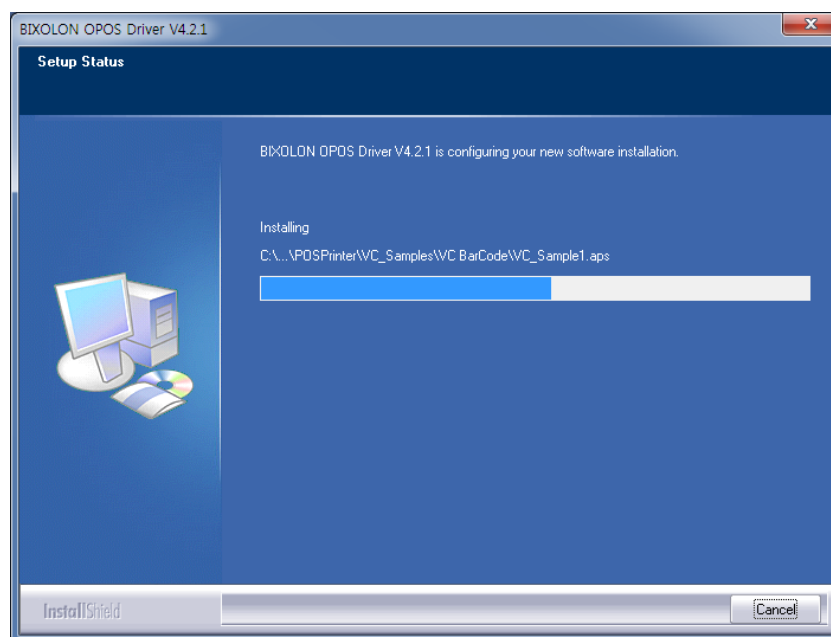
- * 32bit OS: "C:\Program Files\OPOS\BIXOLON OPOS DRIVER\"
- * 64bit OS: "C:\Program Files (x86)\OPOS\BIXOLON OPOS DRIVER\"



5) The Setup confirmation box will be displayed.

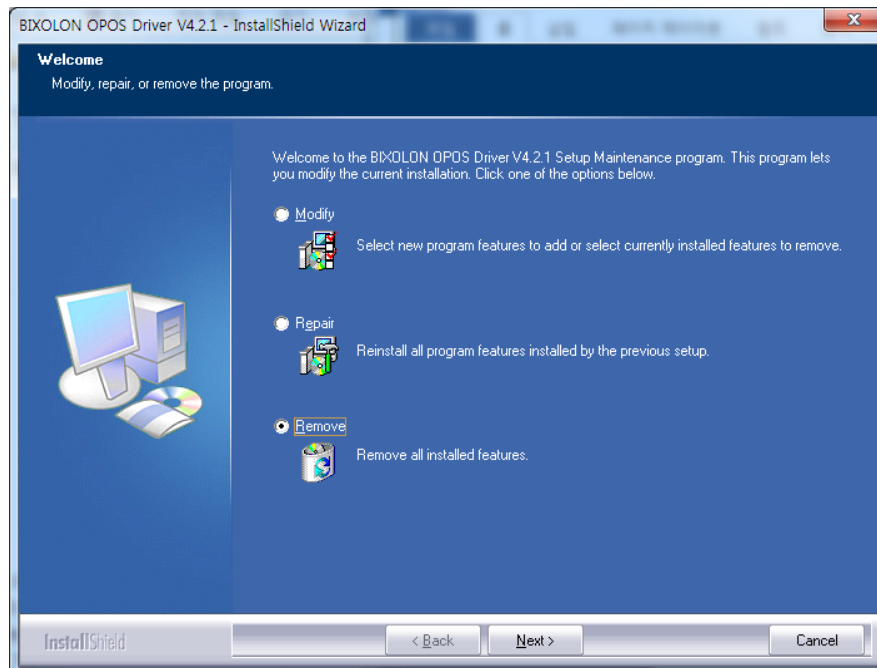


6) Installation of the OPOS driver will be proceeded.



2-2 Uninstallation

- To remove or modify BIXOLON OPOS Driver, Select “BIXOLON OPOS Driver” from “Add / Remove Programs” in Control Panel and remove or modify.



3. Precautions

- 1) The BIXOLON OPOS software package installed supports the devices provided by BIXOLON. Other devices do not guarantee normal operation.
- 2) If installed with other OPOS drivers, it may cause abnormal operation.

Revision history

Ver.	Date	Description
3.00	11-03-2017	New
3.01	21-09-2017	Add new model
3.02	04-12-2017	Add new model
3.03	09-03-2018	Add Label Printer etc.
3.04	21-05-2018	Change Label Printer model name
3.05	30-08-2018	Add new model
3.06	18-10-2018	Add new model
3.07	08-01-2019	Add model SPP-L310, SPP-L410
3.08	05-03-2019	Add model SRP-Q200, XD3-40d
3.09	21-06-2019	Add model XD3-40t, XD5-40d, XD5-43d, XL5-40, XL5-43
3.10	24-10-2019	Change Label Printer model name
3.11	21-11-2019	Add model XD5-40t, XD5-43t, XM7-40
3.12	03-12-2019	Add model BK3-2
3.13	10-03-2020	Add model XM7-20
3.14	16-09-2020	1. Updated supported OS 2. Add model SRP-B300, SRP-S320, SRP-S3000
3.15	26-02-2021	Change the font in the manual Add Model SRP-S200
3.16	26-08-2021	Add Model XT3-40, XT3-43
3.17	07-10-2021	Add Model SPP-C200
3.18	06-12-2021	Add Model SPP-C300
3.19	26-04-2022	Add Model XM7-30
3.20	24-05-2022	Add Model SRP-330III, SRP-332III
3.21	02-06-2022	Add Model SRP-350V, SRP-352V, SRP-350plusV, SRP-352plusV
3.22	21-07-2022	Add Model SRP-380II, SRP-382II
3.23	14-02-2023	Add Model BK5-3
3.24	08-03-2023	Add Model SPP-200
3.25	22-03-2023	Add Model G30
3.26	11-10-2023	Add Model SRP-Q300II
3.27	03-06-2024	1. Updated supported OS 2. Add model SRP-S300II
3.28	18-10-2024	Add Model XD5-40IIId, XD5-43IIId, XD5-40IIIt, XD5-43IIIt
3.29	26-12-2024	Change model names of SRP-380II, SRP-382II Changed model names: SRP-380plus, SRP-382plus
3.30	13-02-2025	Add Model XT6-60, XT6-63
3.31	21-03-2025	Add Model XM5-30
3.32	01-04-2025	Add Model BK5-4, SRP-G300
3.33	28-04-2025	1. Add Model SRP-B300II

		2. Add Model BT3-40, BT3-43, BT5-40, BT5-43, BT5-46, BD5-40d, BD5-43d, BD5-40t, BD5-43t
--	--	--